

PIENAAR ENERGY (PTY) LTD

Wind farm power generation training method



Overview

To maximize the power output of wind farms and address the wake effects and random wind speeds, this paper proposes a control scheme for wind farms based on deep reinforcement learning, integrating both model-based and model-free methods within a TD3 network framed by Actor-Critic. To maximize the power output of wind farms and address the wake effects and random wind speeds, this paper proposes a control scheme for wind farms based on deep reinforcement learning, integrating both model-based and model-free methods within a TD3 network framed by Actor-Critic. This course is part of Renewable Energy & Power Evacuation Specialization Electrical Engineering Students/Professionals, Mechanical Students/Professionals. Gain insight into a topic and learn the fundamentals. Learn at your own pace Explore wind power generation with detailed turbine design for. This GLOMACS training course will cover everything about the wind energy generation industry. It will start with the basics and gradually dive into the significant challenges of transforming atmospheric wind streams into valuable electric energy. The confirmation of this course depends on early registration; Register early to avoid the postponement or cancellation of a course. Some of the main reasons why.

Wind farm power generation training method



Reinforcement Learning-Based Wind Farm Control: Toward Large ...

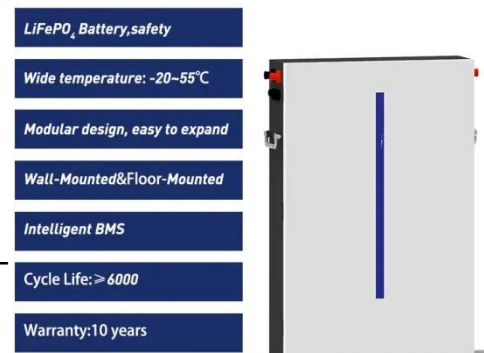
A reinforcement learning (RL)-based approach is proposed in this article to handle these issues, which can increase the long-term farm-level power generation subject to strong wake effects while without ...

[Get Price](#)

Reinforcement Learning Increases Wind Farm Power Production ...

In the present work, we combine an RL control framework with high-fidelity large-eddy simulations (LES) of a small three-turbine wind farm. We obtain a novel closed-loop controller that dynamically adapts ...

[Get Price](#)



Wind Power Generation

This module explains the principles and advantages of bladeless wind power technology and explores the integration of geothermal energy with wind power systems.

[Get Price](#)



Wind Farm Control via Offline Reinforcement Learning With

...

Although online RL is a popular approach for training collaborative control policies, its reliance on constructing wind farm environments consumes substantial computational resources, such as a ...

[Get Price](#)



Wind Farm Manager Training & Development Insights

Explore training & development for wind farm managers in wind electric power generation using advanced BI and Data Analytics.

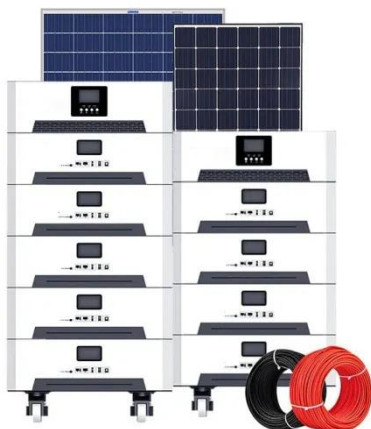
[Get Price](#)

Reinforcement learning to maximize wind turbine energy generation

Reinforcement learning (Double deep Q-

learning) is developed to maximize wind energy energy in changing turbulent winds. BEMT allows three control parameters (rotational speed, blade ...

[Get Price](#)



Maximizing Wind Farm Power Capture Based on Deep

To maximize the power output of wind farms and address the wake effects and random wind speeds, this paper proposes a control scheme for wind farms based on deep reinforcement ...

[Get Price](#)

Maximizing wind farm production through pitch control using graph

This article presents a novel methodology to maximize wind farm power generation by integrating graph neural networks, supervised learning, and reinforcement learning techniques.

[Get Price](#)



Wind Farm Development, Design, Operation and ...

Learn more on wind power generation,



from resource assessment to maintenance, and harness the future of renewables.

[Get Price](#)

Fundamentals of Wind Energy Training Course

It will start with the basics and gradually dive into the significant challenges of transforming atmospheric wind streams into valuable electric energy. It covers measuring the wind to selecting the adequate ...

[Get Price](#)



Contact Us

For catalog requests, pricing, or partnerships, please visit:
<https://pienaarshof.co.za>

