

**PIENAAR ENERGY (PTY) LTD**

# Solar support layout design



All in one  
**50-500 Kwh**  
Hybird  
System

## Overview

---

A solar design layout defines how panels are positioned on a roof or ground system to maximize energy production and long-term performance. An effective layout considers orientation, tilt, shading, spacing, and structural constraints to ensure panels receive optimal sunlight. A smart solar design layout can be the difference between a system that merely looks good on paper and one that consistently delivers maximum energy output in the real world. For large, multi-MW or GW-scale projects, even minor design inefficiencies can meaningfully affect energy yield, Electrical Balance of System (EBoS) costs, constructability, and ultimately. Achieve optimum designs of all your SolarEdge systems with minimal time and effort using a range of automated innovative tools Streamline your designs with an easy-to-use interface that seamlessly integrates a single design across multiple platforms like Autocad, PVsyst, and the SolarEdge. Poor pv layout design planning is one of the most common reasons solar systems underperform — sometimes by 20 to 30%, according to NREL studies. That's a big chunk of energy lost. Installers and designers already juggle enough — permits, client timelines, last-minute site surprises. Whether. Solar panel ground support structures provide a stable foundation for photovoltaic arrays, offering flexibility across diverse terrains and project requirements. Multiple mounting configurations exist, each tailored to specific performance, environmental, and budgetary needs.

## Solar support layout design

---



### Essential Solar Design Principles for Installers in 2025

In this guide, we'll break down the five pillars of great solar design--so you can work smarter, faster, and more profitably. Designing an efficient solar system starts with the basics: panel orientation, tilt, and ...

[Get Price](#)

---

### How to design solar power plant layouts?

How to design solar power plant layouts?  
- RRENDONO®, Focused on Solar Panels, Solar container, Solar Mounting Brackets, Solar Power Generation, Outdoor Solar Lighting ...



[Get Price](#)

---



### Effective Solar PV Layout Design for Max Energy ...

Discover how to design an effective solar PV layout that maximizes energy efficiency. Optimize your setup for better performance with PVFarm.

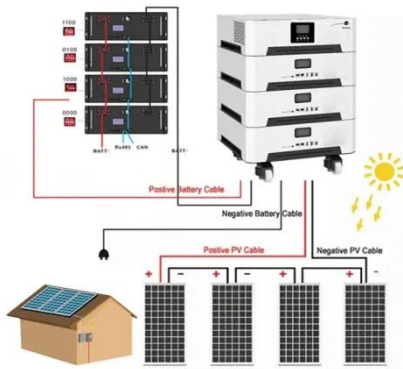
[Get Price](#)

---

## Rooftop Solar PV Design Guide: Tilt Angle, Row Spacing, and Bifacial

Complete guide to rooftop solar PV design: tilt angles, row spacing, bifacial panels, shading control, and layout tips for flat roof systems.

[Get Price](#)



## Design Assistant

EcoFasten's Design Assistant is a sophisticated yet easy-to-use solar project layout tool that supports our installer-favorite rooftop solar mounting systems, the rail-less RockIt System, the rail-based ...

[Get Price](#)

## Solar Design Layout Basics: Complete Guide for Better Performance

Understand the basics of solar design layout. Learn how to design an efficient solar system using tilt, orientation, and shading analysis for maximum efficiency.

[Get Price](#)



## 5 PV Layout Design Secrets That Boost Energy Output By 30%



Discover 5 proven PV layout design strategies, designed for installers and designers to improve solar energy output, reduce losses, and avoid costly mistakes.

[Get Price](#)

---

## How to Design a Solar PV System: A Comprehensive Guide

Designing a solar PV system involves more than just placing panels on a roof. This comprehensive guide walks you through each critical step--site assessment, load analysis, ...

[Get Price](#)



---

## Understanding Solar Ground Support Systems: Design Variations and

Understanding Solar Ground Support Systems: Design Variations and Benefits. Solar panel ground support structures provide a stable foundation for photovoltaic arrays, offering flexibility ...

[Get Price](#)

---

**Contact Us**

For catalog requests, pricing, or partnerships, please visit:  
<https://pienaarshof.co.za>

