

PIENAAR ENERGY (PTY) LTD

Solar inverter 010 code



Voltage range:691.2-947.2V

>6000 cycles(100%DOD)

Rated battery capacity:
216KWH (customizable)

EMS communication:
4G/CAN/RS485



Overview

Error 010 is an “islanding” error, which indicates that some point in the inverter is reading that the AC voltage (grid voltage) is 0 V and this may not be an issue related to the inverter. This could be a result of a loose AC connection, or the circuit breaker has tripped or failed. This can occur due to several electrical parameters falling outside acceptable ranges. The inverter. These faults apply to the following sungrow products: In the event of Fault code 010 being informed through the App, the following corrective measures shall be taken: Grid Power Outage (Islanding) (Code 010) The grid is cut off or the AC circuit breaker is tripped. These codes are designed to alert you to issues ranging from grid instability to wiring problems or internal component faults. This page outlines the most.

Solar inverter 010 code



Sungrow Error Code 010 - Meaning, Causes & Solution

Learn how to troubleshoot the Sungrow Error Code 010 for grid disconnection issues effectively. The Sungrow inverter triggers error 010 when it detects a disconnection from the utility grid. This can ...

[Get Price](#)

Error 010 Islanding

Error 010 is an "islanding" error, which indicates that some point in the inverter is reading that the AC voltage (grid voltage) is 0 V and this may not be an issue related to the inverter. This could be a ...

[Get Price](#)

50KW modular power converter



Sungrow Inverter Error Code 010

What is Sungrow Inverter Error Code 010? Sungrow Inverter Error Code 010 on a Sungrow inverter usually indicates an insulation resistance fault. This error arises when the inverter ...

[Get Price](#)

Fault code 010: Grid Power Outage (Islanding)

Grid Power Outage (Islanding) (Code 010) The grid is cut off or the AC circuit breaker is tripped. 1. Check whether the AC wiring is secure, including the AC distribution cabinet wiring. 2. Measure the ...

[Get Price](#)



Sungrow Solar Inverter Error 010

Is your Sungrow solar inverter showing an Error 010 message on the screen? If so find out what it means and what you can do about it here with Gold Coast Solar Power Solutions .more

[Get Price](#)

Sungrow Inverter Error Code 010

Encountering an error code 010 on your Sungrow inverter can be concerning, but it's a common issue with a straightforward solution. This article explains what the error means, why it occurs, and how to ...

[Get Price](#)



Error 010 - AC Plug

Error code 010 refers to the AC grid supply being cut to the inverter. This document uses an SG5K-D inverter as an



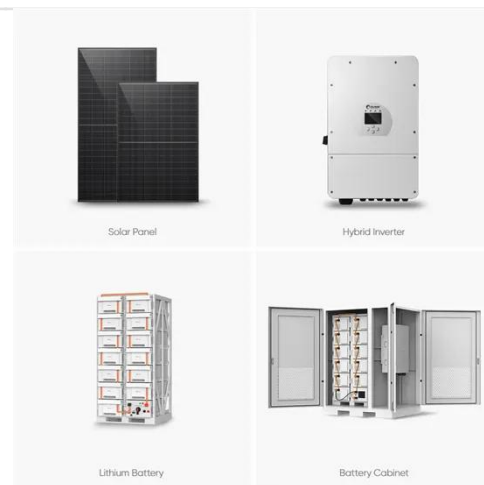
example for explanation. When the grid goes off, the inverter will shut down as per the ...

[Get Price](#)

Sungrow Inverter Error Codes & Troubleshooting Guide

This page outlines the most common Sungrow inverter error codes, what they mean, and what you can do about them--whether you own a residential system or a larger commercial setup.

[Get Price](#)



Sungrow Inverter Fault Codes: A Quick Troubleshooting Guide

Error code 010 indicates a loss of connection to the electrical grid. This can occur due to a local power outage or a tripped circuit breaker in your switchboard. If there's a power outage, the ...

[Get Price](#)

Troubleshooting Sungrow Inverter Error Codes

The error code 010 on a Sungrow inverter indicates a grid failure, often

referred to as "Islanding". This is the most common Sungrow inverter error, occurring when the inverter is unable to

...

[Get Price](#)



Contact Us

For catalog requests, pricing, or partnerships, please visit:
<https://pienaarshof.co.za>

