

PIENAAR ENERGY (PTY) LTD

How much power does a 5g base station consume per hour



How much power does a 5g base station consume per hour



5G home base station power consumption

In addition to other small modules that use electricity, the power consumption of a single 5G base station is generally around 3700 watts, which is about three times that of 4G

[Get Price](#)

What is 5G Energy Consumption?

Learn how much power 5G networks consume and understand how you can reduce RAN energy use. Does Open Ran Save Energy? The Information and Communication Technology (ICT) industry ...



[Get Price](#)



How much power does 5G consume?

One 5G base station is estimated to consume about as much power as 73 households (6), and 3x as much as the previous generation of base stations (5), (7). When base stations, data centers and ...

[Get Price](#)

How Much Power Does 5G Base Station Consume? , Huijue Group E ...

Have you ever wondered how much energy our hyper-connected world is consuming? 5G base stations, the backbone of next-gen connectivity, now draw 3-4 times more power than their ...



[Get Price](#)



What is the Power Consumption of a 5G Base Station?

These 5G base stations consume about three times the power of the 4G stations. The main reason for this spike in power consumption is the addition of massive MIMO and beamforming, ...

[Get Price](#)

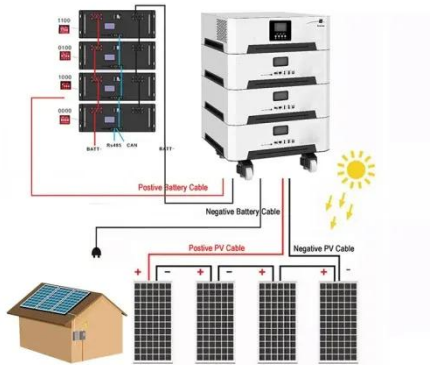
A technical look at 5G energy consumption and performance

To understand this, we need to look closer at the base station power consumption characteristics (Figure 3). The model shows that there is significant energy consumption in the base ...



[Get Price](#)

Energy Consumption of 5G, Wireless Systems and the Digital Ecosystem



"A 5G base station is generally expected to consume roughly three times as much power as a 4G base station. And more 5G base stations are needed to cover the same area," -IEEE Spectrum, 5G's ...

[Get Price](#)

A technical look at 5G energy consumption and performance

Huawei and ZTE's 5G base stations have a 100% load power consumption of 3852.5W and 3674.85W, respectively, while ZTE's 4G base ...

[Get Price](#)



5 Years warranty



Why does 5g base station consume so much power and how to ...

Huawei and ZTE's 5G base stations have a 100% load power consumption of 3852.5W and 3674.85W, respectively, while ZTE's 4G base station has a power consumption of only ...

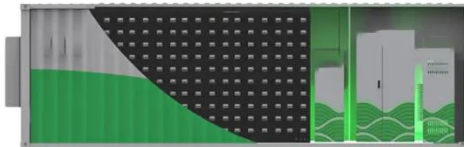
[Get Price](#)

Power consumption based on 5G communication

At present, 5G mobile traffic base stations in energy consumption

accounted for 60% ~ 80%, compared with 4G energy consumption increased three times. In the future, high-density overlapping ...

[Get Price](#)



Front Line Data Study about 5G Power Consumption

The power consumption of a single 5G station is 2.5 to 3.5 times higher than that of a single 4G station. The main factor behind this increase in 5G power consumption is the high power usage of the active ...

[Get Price](#)

Contact Us

For catalog requests, pricing, or partnerships, please visit:
<https://pienaarshof.co.za>

