

PIENAAR ENERGY (PTY) LTD

How many square meters are photovoltaic panels



How many square meters are photovoltaic panels



Solar Energy Generation Per Square Metre: A Complete Guide

On a clear day, each square metre of the Earth's surface receives approximately 1,000 watts of solar energy, also known as 1 kW/m². This energy can be converted into electricity using ...

[Get Price](#)

Solar Power Per Square Meter Calculator

Calculate solar panel energy output per square meter. Get accurate daily, monthly, and annual production estimates based on location, panel specs, and system losses.



[Get Price](#)

Solar Panel Watts Per Square Meter Explained

Compare solar panels to see which generates most electricity per square meter. A higher W/m value means a solar panel produces more power from a given area. This can help you determine how ...

[Get Price](#)



How many square meters are photovoltaic solar panels?

A typical solar panel measures about 1.6 to 1.7 square meters, depending on the manufacturer and efficiency design. Most panels are rectangular, which allows for efficient ...

[Get Price](#)



Solar Power per Square Meter Calculator

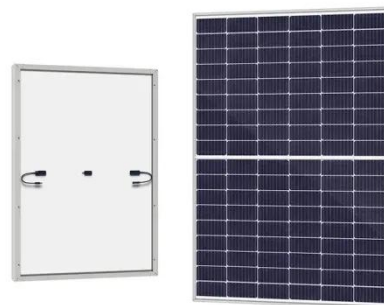
A solar power per square meter calculator takes details regarding these factors and then gives the accurate output generated by the solar panel per square meter.

[Get Price](#)

How Many Square Meters is One Solar Panel?

This article will delve into the average size of a solar panel in square meters. We will explore the standard dimensions, the typical energy output associated with these sizes, and how ...

[Get Price](#)



How Many Square Meters Are Photovoltaic Panels? A ...

Ever wondered how much roof space you'd need to become your own power plant? Let's break down the spatial

requirements of solar panels. A standard 320W photovoltaic panel measures about ...

[Get Price](#)



How many square meters is a photovoltaic solar panel?

Residential panels typically measure around 1.6 square meters, making them suitable for installation on typical rooftops. However, variations in design, efficiency, and manufacturer ...

[Get Price](#)

CE UN38.3 MSDS



How Many Square Meters is a Solar Panel: Key Insights

The average solar panel size is approximately 1.6 square meters (17.2 square feet). This measurement can vary slightly based on the manufacturer and the specific model of the panel. Most ...

[Get Price](#)

Solar Panel Output Per Square Meter

Discover how much electricity solar panels generate per square meter, explore efficiency factors, technology

comparisons, and future innovations in photovoltaic energy.

[Get Price](#)



Contact Us

For catalog requests, pricing, or partnerships, please visit:
<https://pienaarshof.co.za>

