

PIENAAR ENERGY (PTY) LTD

Energy storage cabinet fire emergency lighting



Energy storage cabinet fire emergency lighting



Battery Energy Storage Systems: Main Considerations for Safe

This webpage includes information from first responder and industry guidance as well as background information on battery energy storage systems (challenges & fires), BESS installation ...

[Get Price](#)

Fire Protection Innovation in Outdoor Energy Storage Cabinets: ...

Unlike indoor energy storage systems, outdoor cabinets face unpredictable external conditions. High temperatures, dust, humidity, and even accidental impacts create scenarios where electrical faults or ...



[Get Price](#)



Fire Protection for Lithium-ion Battery Energy Storage Systems

In the patented dual-wavelength detection chamber, the red and blue light scatter signals are accurately combined using precision algorithms to detect by-products of fire and lithium-ion battery off-gas ...

[Get Price](#)

Fire Protection for Lithium-ion Battery Energy Storage Systems

Aspirated smoke and off-gas detection systems
Lithium-ion battery cabinet protection
Siemens aspirated smoke and Off-Gas Particle detection
How does ASD "Off-Gas Particle" (OGP) detection work?
Venturi bypass flow
Insect filter Chamber flow
Dust
Intelligent Classification of Airborne Particles
Advantages of using blue and infrared light scattering
Easy Installation and Integration
Low Maintenance and Long Product Lifecycle
Features and Benefits
Applications
As its name implies - "aspirated" smoke and off-gas detection systems use an "aspirator" mounted in a detector unit. The detector connects to a sample pipe network mounted within the area or object being protected. Using the suction from the aspirator, air is continuously sampled and transported to the detection chamber for analysis for particles
See more on [assets.new.siemens Homeland Security and Emergency Services](https://assets.new.siemens.com/Assets/new/siemens/Assets/new/Homeland_Security_and_Emergency_Services)[PDF]



Battery Energy Storage System (BESS)

Contact site operator for assistance in accordance with the Emergency Response Plan (ERP). Confirm power isolation and shut-of.

[Get Price](#)

Battery Energy Storage System (BESS)



Contact site operator for assistance in accordance with the Emergency Response Plan (ERP). Confirm power isolation and shut-of.

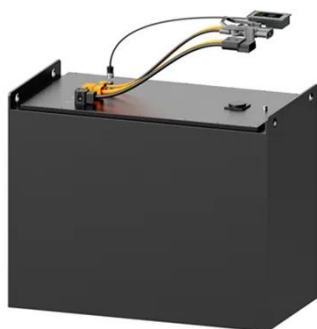
[Get Price](#)

Energy Storage Cabinet Fire Protection Standards: What You Need to ...

In 2023 alone, lithium-ion battery fires caused over \$2.1 billion in damages globally. That's why understanding energy storage cabinet fire protection standards isn't just regulatory red ...



[Get Price](#)



fire safe energy storage cabinet, Industrial Energy Storage Solutions

Suitable for both on-grid and off-grid scenarios, our cabinets convert fluctuating energy prices into predictable costs, ensuring uninterrupted power supply for production lines even during grid outages, ...

[Get Price](#)

Battery Energy Storage Fire Protection-BESS

Fast and accurate detection and indication of a fire emergency is always important - and BESS are no exception. Code often requires radiant energy sensing technology (RST), but not all RST will do well ...

[Get Price](#)



Fire Safety Standards for Integrated Cabinet Systems

Provides installation guidelines and safety requirements for stationary energy storage systems.

[Get Price](#)

Secure Energy Storage: The Role of Lithium Battery Storage Cabinets ...

High-quality lithium battery storage cabinets are made with fire-resistant materials that can withstand internal and external fires. Many models offer up to 90-120 minutes of fire protection, ...

[Get Price](#)



Cabinet Energy Storage System , VREMT

Discover our high-efficiency, modular battery systems with zero capacity loss



and rapid multi-cabinet response. Ideal for industrial, commercial, and emergency applications, our solutions offer remote ...

[Get Price](#)

Contact Us

For catalog requests, pricing, or partnerships, please visit:
<https://pienaarshof.co.za>

